

**SECTION A**

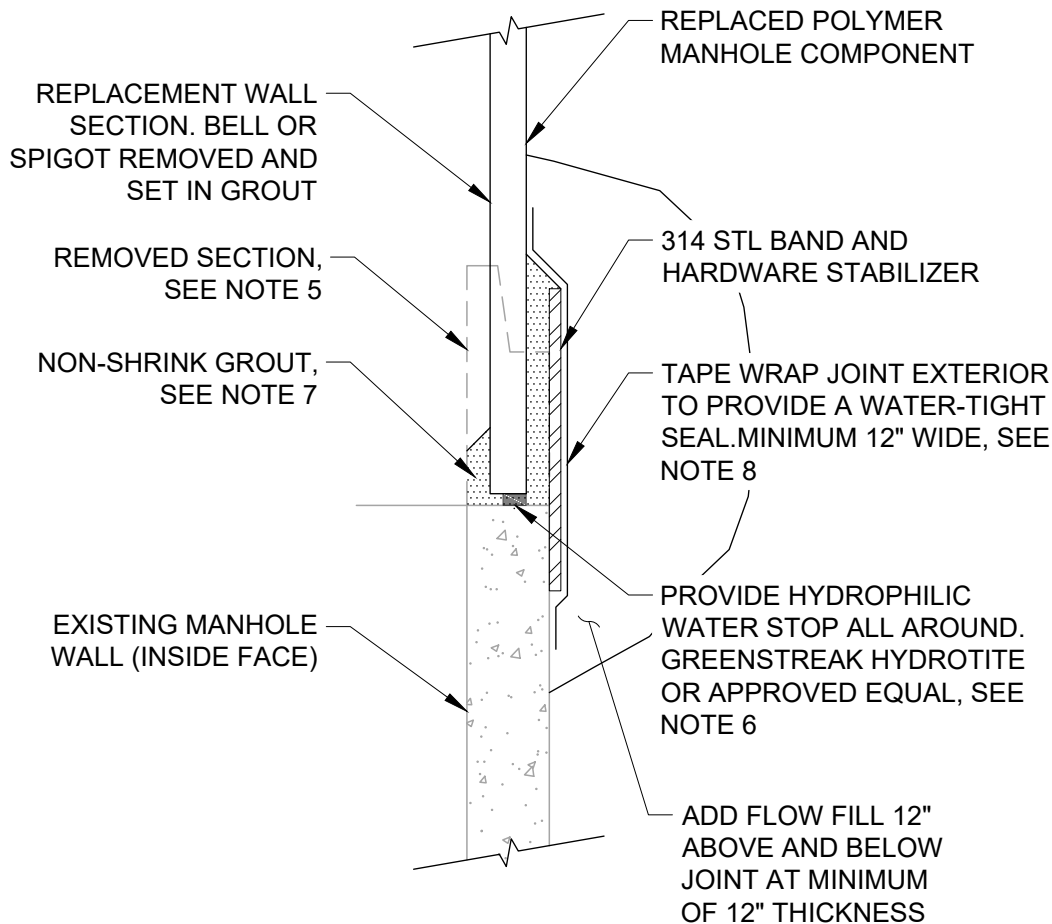


**NORTH DAVIS SEWER DISTRICT**

**ND-15 Partial Manhole Replacement or Adjustment 1 of 3**

## NOTES:

1. CONTRACTOR MUST NOTIFY THE DISTRICT 48 HOURS BEFORE WORK BEGINS.
2. CONTRACTOR SHALL BE RESPONSIBLE FOR PROTECTION OF EXISTING SEWER AND OTHER UTILITIES, PROPER BACKFILLING, COMPACTING, AND SURFACE RESTORATION.
3. CONTRACTOR MUST INSPECT MANHOLE PRIOR TO PROCURING REPLACEMENT COMPONENTS TO FIELD VERIFY REQUIRED COMPONENTS AND DEPTH OF REPLACEMENT. PRECAST REPLACEMENT COMPONENTS SHALL BE POLYMER CONCRETE PER ND-12, UNLESS OTHERWISE SPECIFIED.
4. WHERE EXISTING CONES ARE DAMAGED, CONES SHALL BE REPLACED IN THEIR ENTIRETY. FLAT-TOPS SHALL NOT BE PROVIDED WHERE ECCENTRIC OR CONCENTRIC CONES ARE REPLACED.
5. MANHOLE SECTIONS SHALL BE SAWCUT TO CLEAN, NEAT LINES. CUTS AND PREPARED SURFACES SHALL BE INSPECTED PRIOR TO PLACEMENT OF WATERSTOP OR GROUT.
6. HYDROPHILIC WATER STOP SHALL BE GREENSTREAK HYDROTITE OR APPROVED EQUAL. GLUE TO REPLACEMENT SECTION WITH CONTACT CEMENT, ADEKA KBA-1510FP, ULTRA P-201, OR APPROVED EQUAL.
7. GROUT SHALL BE FULL STRENGTH, NON-METALLIC, NON-SHRINK, TYPE V GROUT (MASTERFLOW 713, FIVESTAR GROUT, OR APPROVED EQUAL) WITH ADDITIVES FOR PROTECTION AGAINST HYDROGEN SULFIDE ATTACK. PROVIDE MINIMUM 1" GROUT COVERAGE BOTH SIDES OF WATER STOP.
8. EXTERIOR JOINT WRAP TO MEET OR EXCEED REQUIREMENTS PER ASTM C877 TYPE II OR III (CRETEX JOINT WRAP, EZ WRAP, OR APPROVED EQUAL). INSTALL PER MANUFACTURER'S REQUIREMENTS TO FULLY SEAL JOINT.
9. CONCRETE COMPONENTS SHALL BE CORROSION PROTECTED. COATINGS SHALL MATCH EXISTING COATINGS WITH TERMINATIONS INSTALLED AT POLYMER CONCRETE SECTION.
10. SEE ND-06 FOR ACCEPTANCE TESTING, FINAL COMPLETION, AND WARRANTY REQUIREMENTS.
11. CONTRACTOR TO SUBMIT PLAN FOR ENGINEERS APPROVAL.

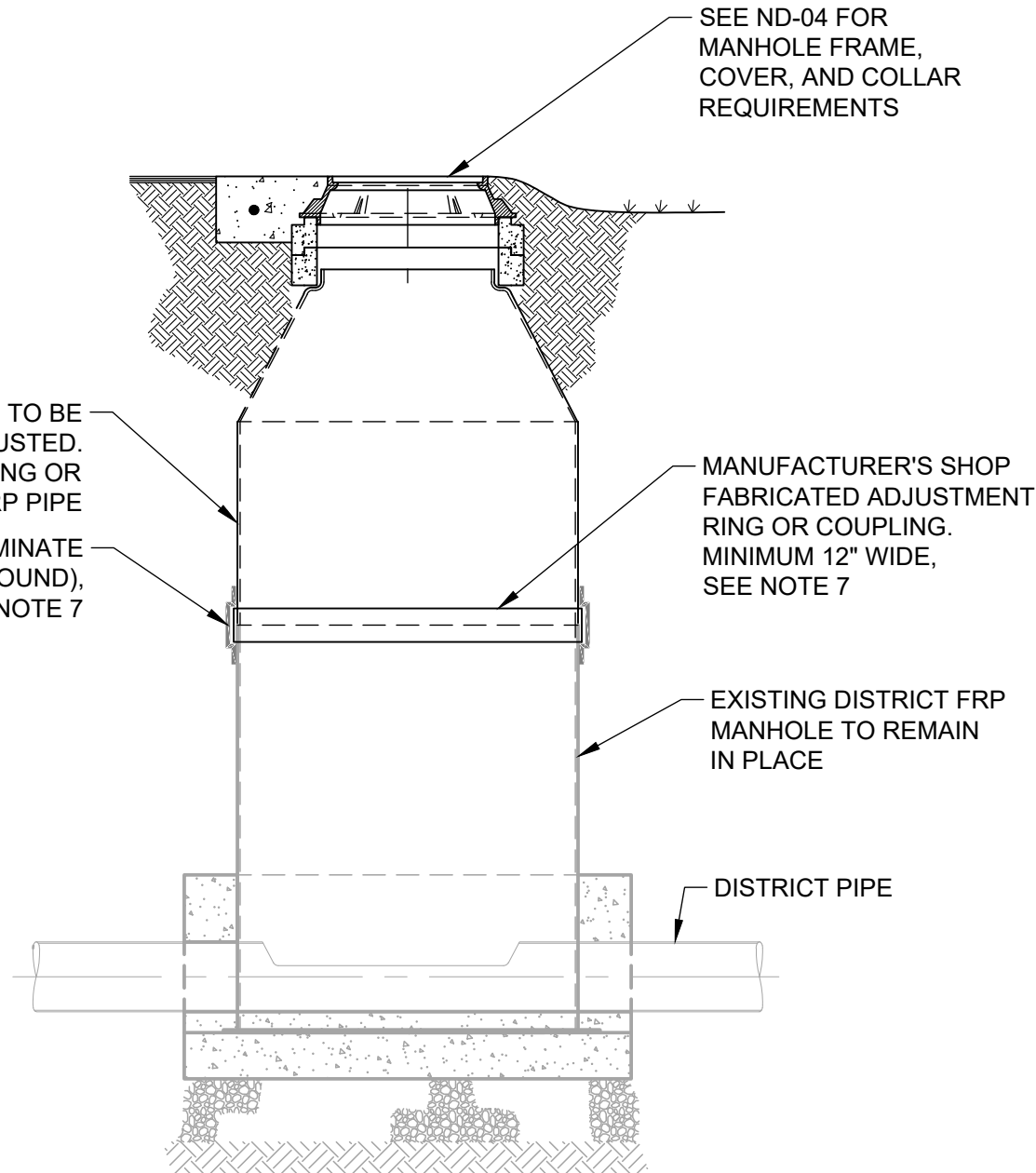


**SECTION B**



**NORTH DAVIS SEWER DISTRICT**

## **ND-15 Partial Manhole Replacement or Adjustment 2 of 3**



**NOTES:**

1. CONTRACTOR MUST NOTIFY THE DISTRICT 48 HOURS BEFORE WORK BEGINS.
2. CONTRACTOR SHALL BE RESPONSIBLE FOR PROTECTION OF EXISTING SEWER AND OTHER UTILITIES, PROPER BACKFILLING, COMPACTING, AND SURFACE RESTORATION.
3. CONTRACTOR MUST INSPECT MANHOLE PRIOR TO PROCURING REPLACEMENT COMPONENTS TO FIELD VERIFY REQUIRED COMPONENTS AND DEPTH OF REPLACEMENT. PRECAST REPLACEMENT COMPONENTS SHALL BE FRP PER ND-11, UNLESS OTHERWISE SPECIFIED.
4. WHERE EXISTING CONES ARE DAMAGED, CONES SHALL BE REPLACED IN THEIR ENTIRETY.
5. FRP MANHOLE COMPONENTS MAY HAVE LONG LEAD TIMES FOR DELIVERY. CONTRACTOR SHALL COORDINATE AND SCHEDULE INSPECTION OF THE WORK ACCOUNTING FOR LEAD TIME AND DELIVERY OF FRP MANHOLE COMPONENTS.
6. MANHOLE SECTIONS SHALL BE SAWCUT TO CLEAN, NEAT LINES IN ACCORDANCE WITH THE FRP MANUFACTURER'S REQUIREMENTS. CUTS AND PREPARED SURFACES SHALL BE INSPECTED PRIOR TO PLACEMENT OF WATERSTOP OR GROUT.
7. JOINTS MUST BE WATERTIGHT WITH FABRICATED ADJUSTMENT RINGS AND FRP LAY UP LAMINATE ARE RECOMMENDED BY THE FRP MANUFACTURER. GROUT AND EXTERNAL WRAP SHALL NOT BE SUBSTITUTED.
8. SEE ND-06 FOR ACCEPTANCE TESTING, FINAL COMPLETION, AND WARRANTY REQUIREMENTS.



**NORTH DAVIS SEWER DISTRICT**

**ND-15 Partial Manhole Replacement or Adjustment 3 of 3**